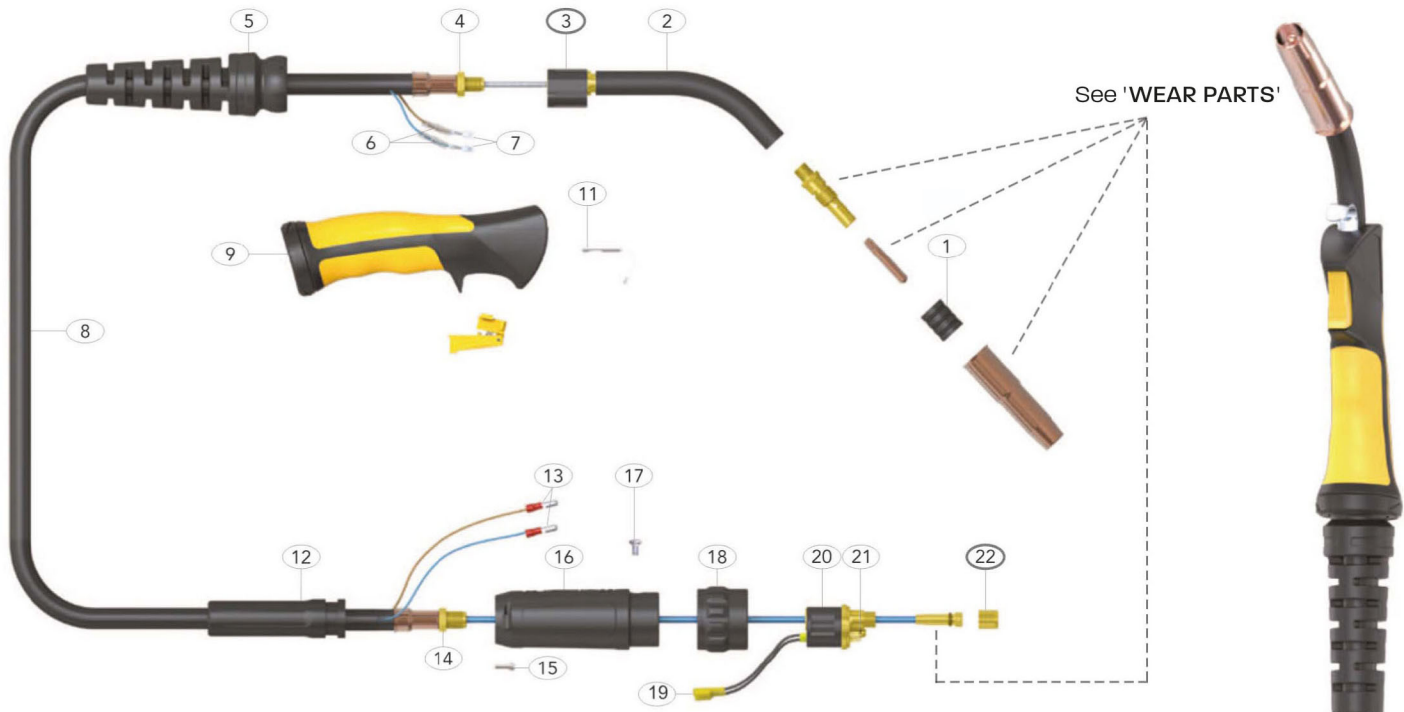




Rating: 320A CO₂, 270A mixed gas, EN60974-7 @ 60% duty cycle. 0.8 to 1.2mm wires



Model		
Description	Part Number	
Welding Torch c/w Euro Fitting	12ft	15ft
	CWGPGTW400-12E	CWGPGTW400-15E

Spare parts			
Part Number	Description	Part Number	Description
1	CW34A Adjustable Nozzle Insulator	17	CWBL1541 Gun Plug Screw
2	CWLS-TW4 Swan Neck Assembly	18	CWC1519/S Gun Plug Nut
3	CWG1515 Ergo Handle Location Body	19	CWB1523 Gun Plug Terminal Female
4	CWB1505 Lock Nut	20	CWC174EX-1 TWC Euro Gun Plug Body
5	CWG8016-BK Handle Cable Support C/W Ball Joint	21	CWB1524 Gun Plug 'O' Ring
6	CWB1521-C Cable Terminal Cover	22	CWXL1826 Liner Retaining Nut
7	CWB1521 Cable Terminal		
8	CWSTH400-10E Cable Assembly X 10ft		
	CWSTH400-12E Cable Assembly X 12ft		
	CWSTH400-15E Cable Assembly X 15ft		
9	CWG2514-BK Handle and Lock Nut Assembly		
10	CWG2516 Medium/Large Ergo Trigger		
11	CWB2517 Hanger Hook (Optional Extra)		
12	CWPA3541 Cable Support		
13	CWB1522 Cable Terminal Male		
14	CWXL1542 Cable End Lock Nut (M12 X 1.0)		
15	CWSCSP1-1 Handle Screw		
16	CWSC2578/L Gun Plug Housing		

