

### Tweco® Style Head

### Lincoln® Style Termination

Successful aluminum welding requires a stable arc.

A spool gun ensures a steady, consistent, and reliable wire feeding for soft wires like aluminum or brazing wires due to a short feeding distance.

Spool gun improves the "feed ability" of aluminum wire by locating a small, 4-inch diameter wire spool (a one-pound aluminum spool) on a pistol-grip style gun. Using a spool gun saves considerable welding time while ensuring high weld quality.

**SM300** Series Spool Guns are designed to feed wires which are difficult to feed through the standard MIG gun. These Guns can be used for stainless steel, flux-cored, and thin solid wires however they are most commonly used for aluminum and brazing wires measuring 0.03, 0.035, and 0.040 in.

If you are going to use a MIG gun longer than 15 feet with solid wire or flux-cored measuring 0.023 or 0.030 in., Spool Gun is the best option.

**SM300** is a 300 A lightweight, well-balanced, dual groove drive roll, easy to set up, designed for easy and reliable aluminum wire feeding with a variety of CV power sources and engine-driven welders.

The design of this spool gun reduces the maintenance and production time by allowing easy access to the drive rollers and performing routine maintenance without disassembling the gun.

## FEATURES

- Cost-effective solution for precise control of MIG welding with hard and soft wires.
- Excellent and reliable for running one-pound aluminum spool MIG welding wire or two-pound mild steel and stainless-steel spool.
- Furthermore, silicon bronze MIG welding wire can be used as well.
- A unique wire break keeps the spool under constant tension to prevent the overrun of the wire.
- Excellent wire retainer to keep the wire from de-reeling in operation.
- Impact-resistant handle that encased a durable motor.
- Possibility of using threaded or slip-on gas nozzles.
- Clear flip top wire spool cover allows you to check the remaining wire immediately.
- Ideal for medium and Heavy-duty industries because of a powerful 24V motor.

Rating : 230A CO<sub>2</sub> 200A mixed gas

@ 60% duty cycle.

(as Standard IEC EN60974-7)



#### Recommended For :

Aluminum wires: 0.030 to 0.045 in. (0.8 to 1.2 mm)

Brazing wires: 0.030 to 0.040 (0.8 to 1.0 mm)

Flux cored wires: 0.030 to 0.045 (0.8 to 1.2 mm)

Solid wires: 0.030 to 0.040 in. (0.8 to 1.0 mm)

Gun Length : 20ft. (6m)

#### Recommended Gas Flow :

22-27 CHF (11-13 l/min)

for 1/2 inch (12.8 mm) nozzle bore

30-35 CHF (14-17 l/min)

for 5/8 inch (16.0 mm) nozzle bore

30-40 CHF (14-19 l/min)

for 3/4 inch (19.0 mm) nozzle bore



Lincoln® Style Termination

- Easy access to the drive roll tension and pressure lever on the pull gun handle.
- A specially designed cable possesses outstanding flexibility with the highest heat and abrasion resistance of any known cable.
- Equipped with a special termination adapter that allows you to change the installed termination to other versatile termination styles.

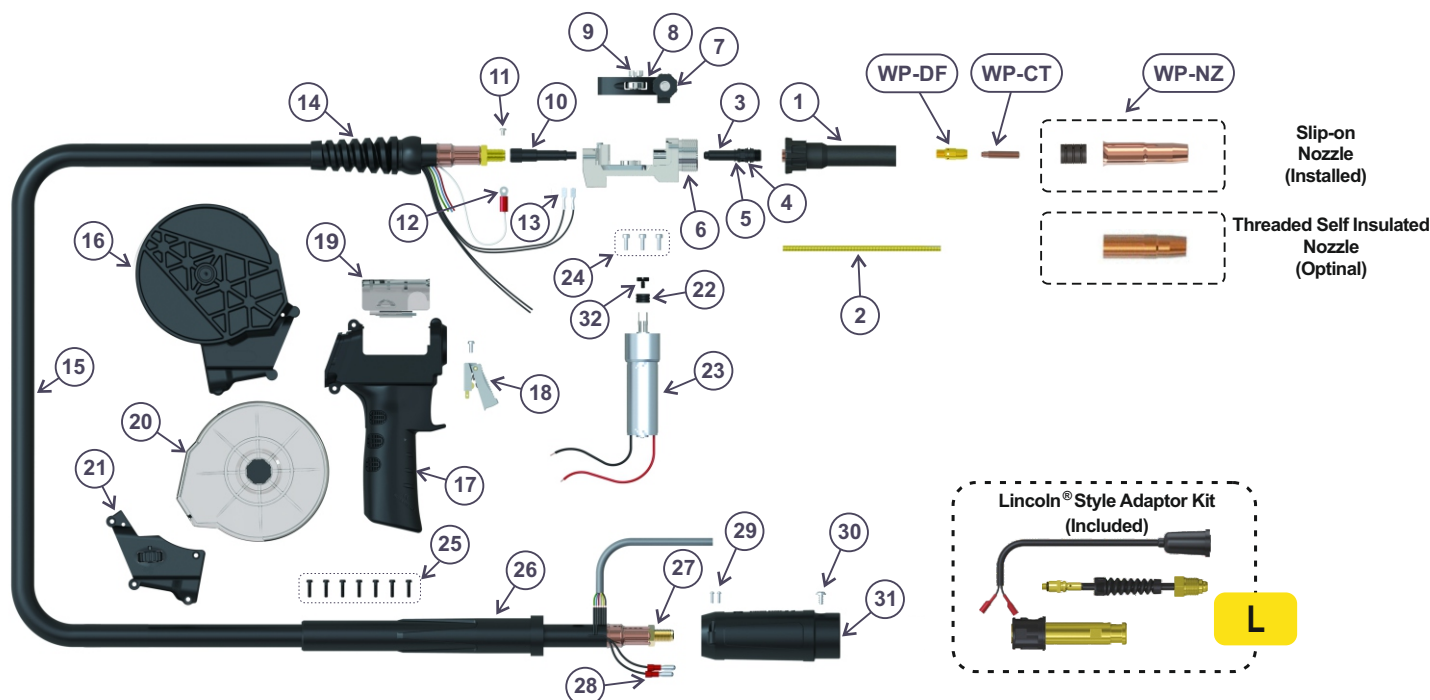
## Technical Specification

Process	Description
Motor Voltage	24 Volt DC
Head and Nozzle style	Tweco®
Maximum Spool Size	4" / 102mm
Copper Cable Length	20 ft. (6 meter)

## AIR-COOLED MIG WELDING SPOOL GUN, SM300 SERIES

**SM300 TL**

Rating : 230A CO<sub>2</sub> 200A mixed gas @ 60% duty cycle.  
 (as Standard IEC EN60974-7) Length 20 ft. (6m)



### SM300 TL

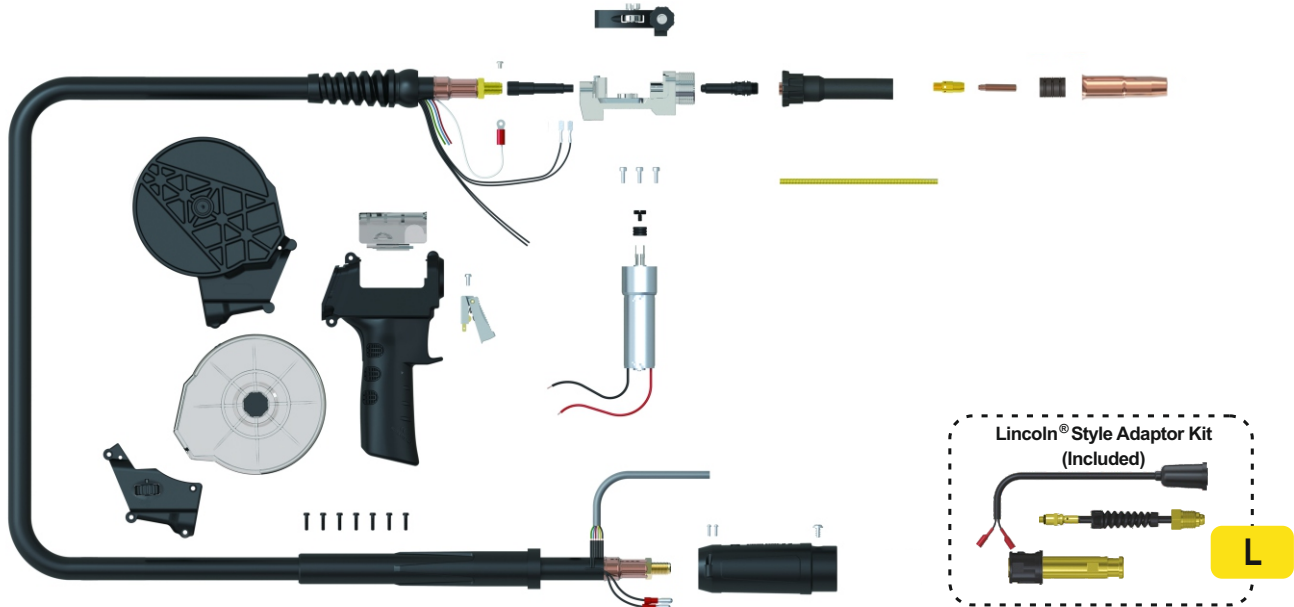
#### AIR-COOLED MIG WELDING SPOOL GUN (CWGPG-PLSPTW300-24-P10-60TL)

Item	Description	Part Number	Item	Description	Part Number
1	Tension Knob	CWUGP36402B	22	Driver Roll For Steel Wire Ø0.030" (0.8mm)	CWUGP7020W-08
2	Jump Liner	CWGPTW302A	22	Driver Roll For Steel Wire Ø0.035" (0.9mm)	CWUGP7020W-09
3	Jump Liner Nipple	CWUGP36006	22	Driver Roll For Steel Wire Ø0.040" (1.0mm)	CWUGP7020W-10
4	'O' Ring	Cw9 X 1.5	22	Driver Roll For Aluminium Wire Ø0.030" (0.8mm)	CWUGP7020W-08U
5	'O' Ring	Cw7 X 1.5	22	Driver Roll For Aluminium Wire Ø0.035" (0.9mm)	CWUGP7020W-09U
6	Motor Body	CWUSP36001	22	Driver Roll For Aluminium Wire Ø0.040" (1.0mm)	CWUGP7020W-10U
7	Tension Knob	CWUG P36402B	22	Driver Roll For Aluminium Wire Ø0.045" (1.2mm)	CWUGP7020W-12U
8	Pressure Arm Assembly	CWUGP36402	23	Motor 24V DC	CWUGP7020-24
9	Pressure Roll	CWUGP36402R	24	Motor Screw Pack	CWUGPMS1
10	Wire Guide	CWUSP36006	25	Handle Screw Pack	CWUKA3X20
11	Screw Pack	CWSC2563	26	Cable Support	CWUPA3541
12	Circular Cold Terminal	CWSC2597	27	Lock Nut	CWUXL1542
13	Cable Terminal	CWUb1521	28	Cable Terminal Male	CWUB1522
14	Cable Support	CWMIG8015	29	Gun Plug Housing Screw	CWSCSP1-1
15	Coax Cable Assembly	CWGPG-PGSP3609-60ER	30	Gun Plug Screw	CWUBL1541
16	Spool Holder	CWUSP2515SP-B	31	Gun Plug Housing Assembly	CWSC2578H/L
17	Spool-On Handle	CWCSP2515-KJ	32	Screw	CWUGP7020-24-4
18	Push-Pull Trigger	CWUGP2516	L	Lincoln® Style Adaptor Kit	CWUECEL1575K
19	Wire Feeder Cover	CWUGP2514-C	WP-NZ	Wear Part - Nozzle	See the next pages
20	Spool Cover	CWUSP2515SP-C	WP-CT	Wear Part - Contact Tip	See the next pages
21	Wire Speed Control 10KΩ	CWUSP2515SP-PT-10K	WP-DF	Wear Part - Diffuser	See the next pages

## AIR-COOLED MIG WELDING SPOOL GUN, SM300 SERIES

**SM300 TL**

Rating : 230A CO<sub>2</sub> 200A mixed gas @ 60% duty cycle.  
(as Standard IEC EN60974-7) Length 20 ft. (6m)

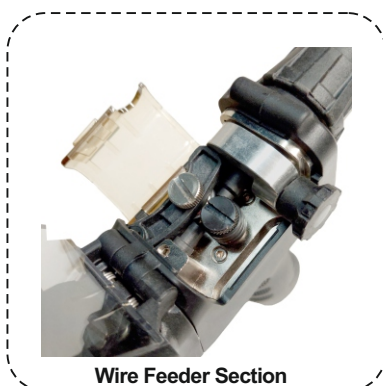


By using one of the following adaptor kits, the termination type of this MIG gun can be changed to another widely used termination types.



### Optional Termination Adaptor Kits

Item	Description	Part Number
M	Miller® Style Adaptor Kit	CWUECEM1575K
T	Tweco® Style Adaptor Kit	CWUECET1575K
E	Euro Style Adaptor Kit	CWUECEE1575K



Wire Feeder Section



Large surface area soft grips



Wire Retainer

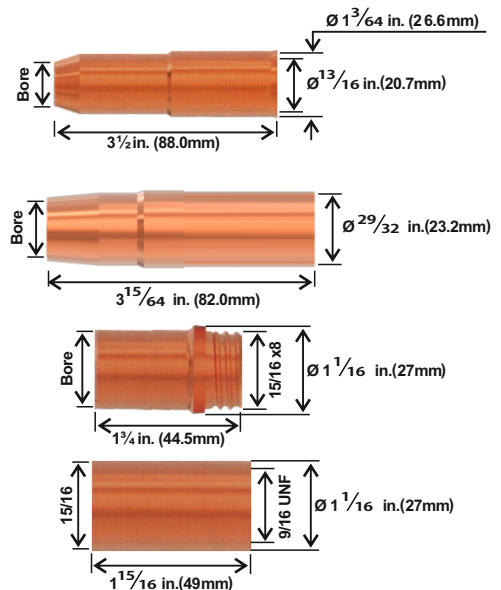
## AIR-COOLED MIG WELDING SPOOL GUN, SM300 SERIES

**SM300 TL**

Rating : 230A CO<sub>2</sub> 200A mixed gas @ 60% duty cycle.  
 (as Standard IEC EN60974-7) Length 20 ft. (6m)

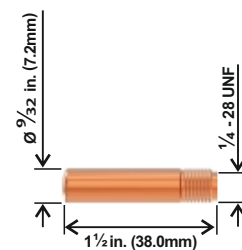
### Wear Part Nozzles

Part No.	Description	Bore	Wall	Material
CWU22AH-50	Adjustable Slip-On Nozzle	½ in. (12.8mm)	⅜ in. (2.25mm)	Copper
CWU22AH-62	Adjustable Slip-On Nozzle	⅝ in. (16mm)	⅜ in. (2.25mm)	Copper
CWU22AH-75	Adjustable Slip-On Nozzle	¾ in. (19mm)	⅜ in. (2.25mm)	Copper
CWU23-50	Threaded Nozzle Self Insulated	½ in. (12.7mm)	1/16 in. (1.6mm)	Copper
CWU23-62	Threaded Nozzle Self Insulated	⅝ in. (15.9mm)	1/16 in. (1.6mm)	Copper
CWU23-75	Threaded Nozzle Self Insulated	¾ in. (19.0mm)	1/16 in. (1.6mm)	Copper
CWU24CT-50S	Nozzle Coarse Thread	½ in. (12.8mm)	¾ in. (3.75mm)	Copper
CWU24CT-62S	Nozzle Coarse Thread	⅝ in. (16mm)	¾ in. (3.75mm)	Copper
CWU24CT-75S	Nozzle Coarse Thread	¾ in. (19mm)	¾ in. (3.75mm)	Copper
CWU34CT	Nozzle Insulator Fixed			



### Wear Part Contact Tips

Part No.	Description	Material	Wire Size
CWU14H-30	Contact Tip	Ecu	0.030 in. (0.8mm)
CWU14H-35	Contact Tip	Ecu	0.035 in. (0.9mm)
CWU14H-40	Contact Tip	Ecu	0.040 in. (1.0mm)
CWU14H-45	Contact Tip	Ecu	0.045 in. (1.2mm)
CWU14H-52	Contact Tip	Ecu	0.052 in. (1.3mm)
CWU14H-116	Contact Tip	Ecu	1/16 in. (1.6mm)



### Wear Part Diffuser

Part No.	Description	Material
CWU52A	Diffuser	Brass

