

Introduction of the Welding Cart Description of the Welding Cart TR4-D Series

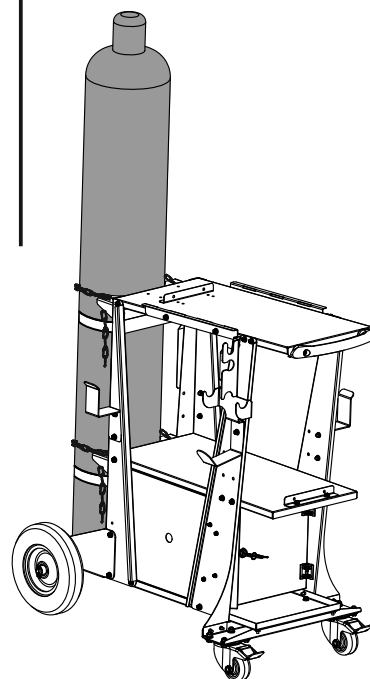
There are several welding carts available today in the market, but each has flaws or drawbacks. The Canaweld design team has created a new welding cart with several benefits.

TR4-D Series is a new welding cart platform that supports four distinct product kinds.

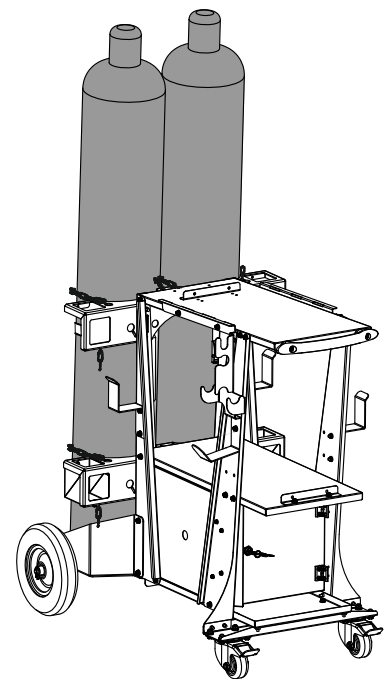
- TR4-D1-1 Single Gas Bottle (With/without cabinet)
- TR4-D1-2 Double Gas Bottle (With/without cabinet)

FEATURES

- Compatible with the majority of welding machines including MIG/TIG/Stick/ Plasma/Cooling Unit, etc.
- Option to switch between single and double gas bottle configurations, with the ability to add or remove the necessary gas bottle bracket.
- Compatible with two gas bottles (TR4-D1-2) .
- Compatible with a single gas bottle (TR4-D1-1) .
- Possibility to instal a cabinet in the lower part of the welding cart to store all sorts of welding helmets, personal goods, and so on.
- Lightweight, strong, and easy to transport.
- Excellent balance during movement, even on a slanted surface.
- The possibility to adjust the middle horizontal panel according to the height of different machines.
- Very fast and accurate assembly, as a result of CNC machine precision manufacturing.
- Using a fixed nut system eliminates the need to separate nuts, making installation quick, straightforward, and hassle-free.
- Equipped with belt and security lock to keep the machine secure.
- Equipped with belts, locks, and chains to keep the capsules secure.
- Equipped with swivel casters and brakes in the front, and 10-inch wheels at the back.
- Using galvanized parts for longer-lasting protection against scratches.
- Storage space for TIG ROD (in TR4-D1-2 Double-Gas-Bottle model)
- Equipped with TIG Torch, MIG GUN and cable holder.
- Equipped with brackets for hanging welding cables.
- Equipped with brackets for hanging power.



Single Gas Bottle



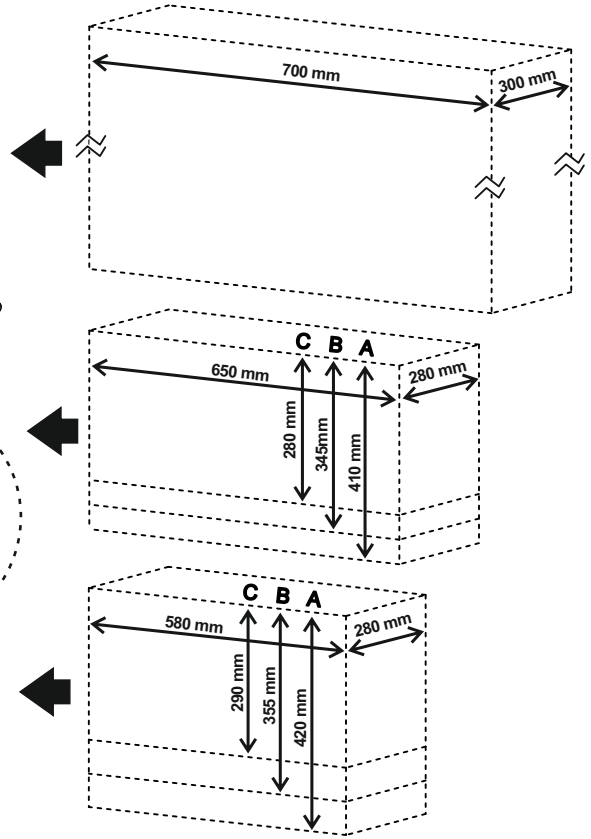
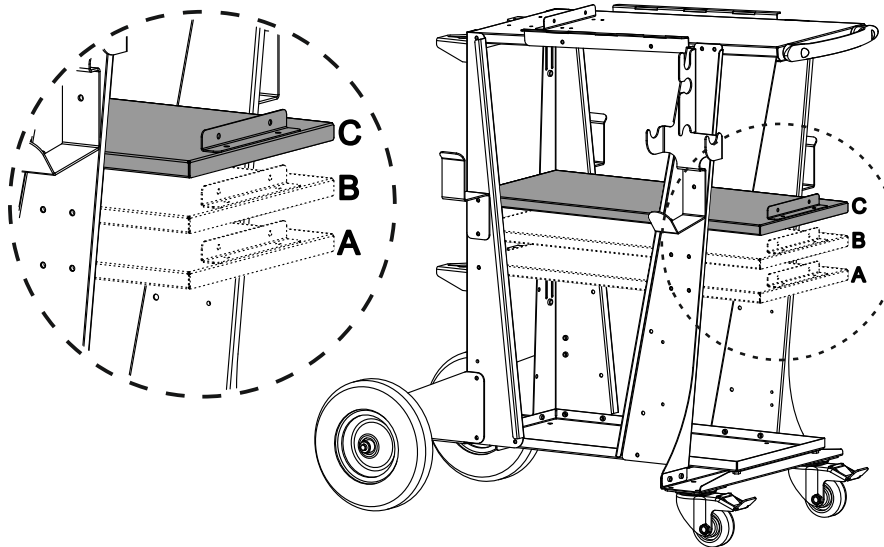
Double Gas Bottle

WELDING CART TR4-D SERIES (Single & Double Gas Bottle)

TR4-D Series

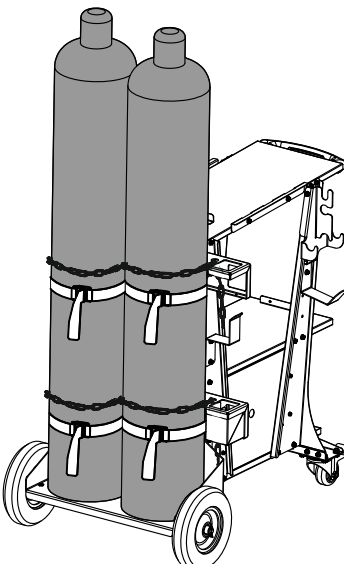
Specifications

In both single and double-gas-bottle trolleys you can have different heights in the two lower shelves based on the different positioning of the middle plate.

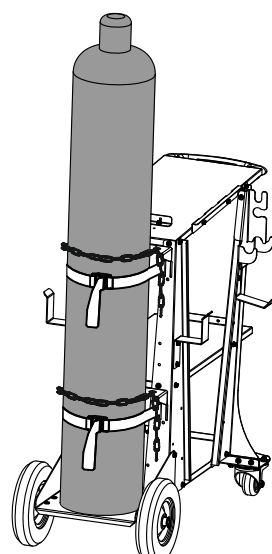


| Trolley's Package Specifications | | |
|----------------------------------|--------------------|--------------------|
| PACKAGE | WEIGHT | DIMENSION |
| Main | 31.5 kg – 69.4 lbs | 900 * 350 * 340 mm |
| Double | 13.5 kg – 29.7 lbs | 700 * 370 * 290 mm |
| Single | 6 kg – 13.2 lbs | 370 * 350 * 220 mm |

| Assembled Trolley Specifications | |
|----------------------------------|---------------------|
| MODEL | DIMENSION |
| Double (41 kg – 90 lbs) | 1080 * 680 * 970 mm |
| Single (35 kg – 75 lbs) | 1100 * 560 * 970 mm |



Double Gas Bottle
TR4_D1_2



Single Gas Bottle
TR4_D1_1